

STEEL WOOL FIBER

Product Description

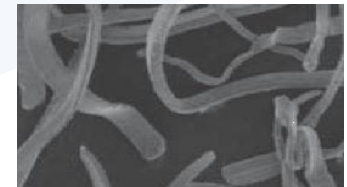
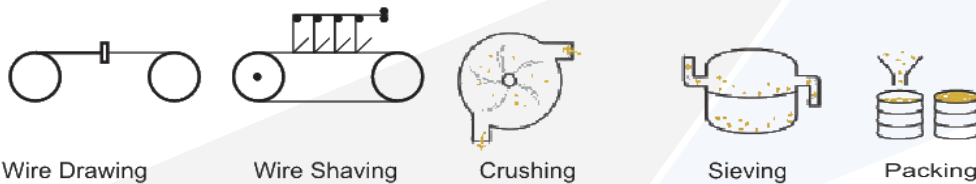
Steel Wool Fiber is low carbon oil free dry steel fiber, which we are supplying to Friction Industry with current capacity over 2800 MT/year.

We offer Steel wool in a variety of grades, or thicknesses, from coarse to extra fine and very long to very short fiber particles. We produce tailor made grades of different thickness/lengths as per customer specific requirements.

We are manufacturing Steel Wool Fiber by wire shaving method and sourcing raw material (Steel Wire Rod) from authentic sources like RINL Vizag Steel/JSW Steel.



Manufacturing Process



Steel Wool Fiber

Technical Data

Grade	Bulk Density-Loose (g/cc)	Screen Analysis - Mesh ASTM (%)						Specific Gravity (g/cm ³)	Oil Cont. (%)	Chemical Analysis (%)				
		+20	+40	+100	-100					C	Si	Mn	P	S
SF1625	0.90 – 1.30	+20	+40	+100	-100			7.6 – 8.0	<0.5	C	Si	Mn	P	S
		NIL	0-10	20-40	50-70					0.08-0.012	<0.30	0.50-0.90	<0.04	<0.04
SF4033	0.65 – 1.00	NIL	0-15	20-45	45-75			7.6 – 8.0	<0.5	0.08-0.012	<0.30	0.50-0.90	<0.04	<0.04
SF100	0.90 - 1.30	+14	+20	+40	+70	+100	-100	7.6 – 8.0	<0.5	C	Si	Mn	P	S
		NIL	0-2	0-10	10-25	10-30	45-70			0.08-0.012	<0.30	0.50-0.90	<0.04	<0.04
SF100B	0.65 – 1.00	NIL	0-5	5-15	15-30	5-25	45-70	7.6 – 8.0	<0.5	0.08-0.012	<0.30	0.50-0.90	<0.04	<0.04
SF200	0.60 – 0.90	+18	+40	+60	+100	+200	-200	7.6 – 8.0	<0.5	C	Si	Mn	P	S
		NIL	0-5	5-15	10-20	15-30	30-60			0.08-0.012	<0.30	0.50-0.90	<0.04	<0.04
SF3340	0.65 – 1.00	+10	+18	+30	+60	+120	-120	7.6 – 8.0	<0.5	C	Si	Mn	P	S
		NIL	NIL	0-5	10-30	15-30	45-70			0.08-0.012	<0.30	0.50-0.90	<0.04	<0.04

***All grades are customizable as per customer specifications.**

Storage

Store in dry condition, preferably in plastic sheet or wooden pallet in go down away from heat & moisture.

Packaging

Steel Wool Fiber is packed in standard 25 Kg each HDPE Bag (or Customer specified).